



User Guide

OEC Trader

eSignal Plug-In

February 25, 2009

Table of Contents

Contents

DOCUMENT HISTORY	3
ESIGNAL PLUG-IN	4
SET UP & CONNECTION TESTING.....	5
MAPPING	5
<i>Mapping Dialog Options</i>	5

Document History

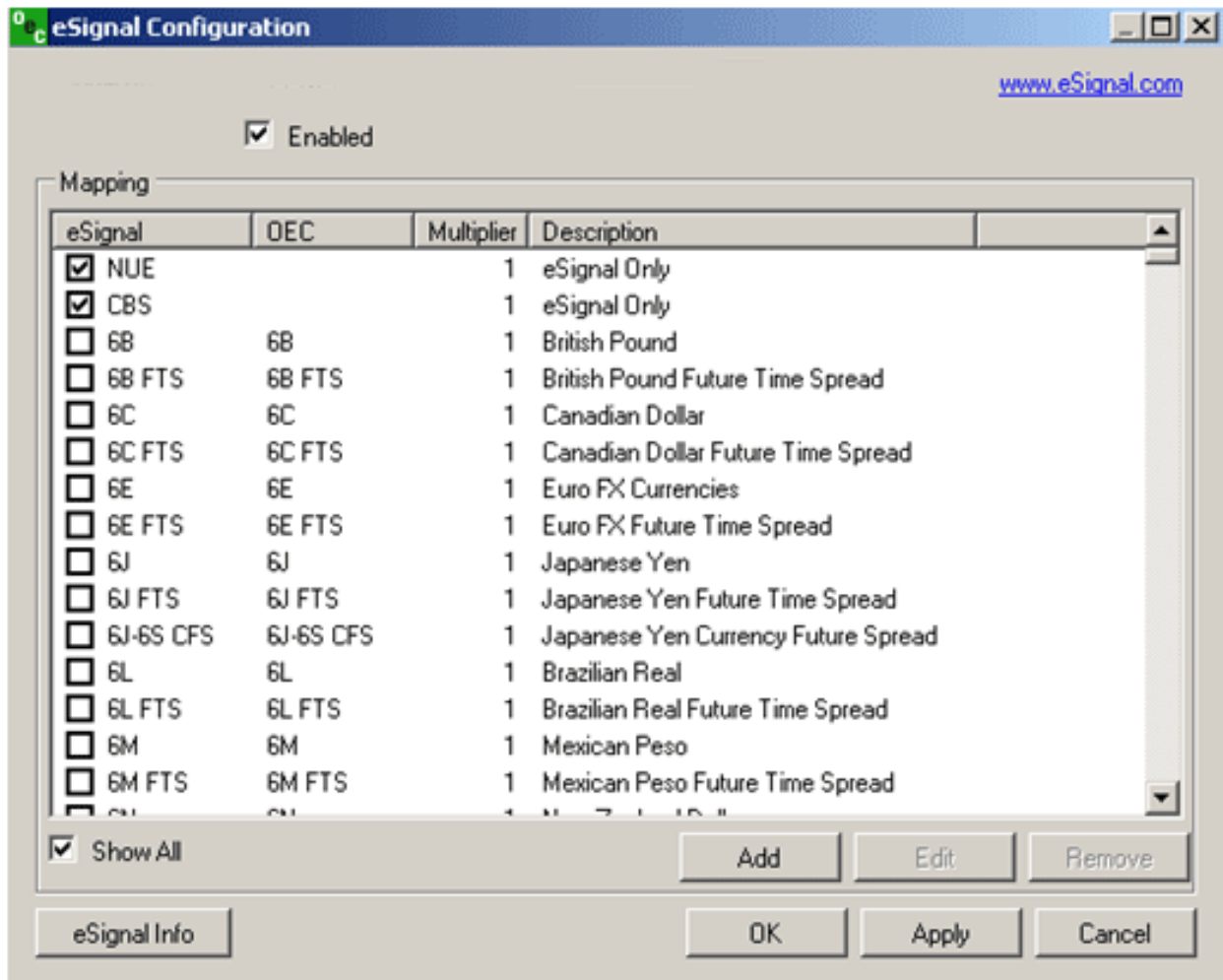
Version	Effective Date	Authorization
1.0	2/25/09	Information Technology

Note: This document supports all previous versions through the effective date of this release.

eSignal Plug-in

The eSignal plug-in allows you to utilize eSignal market data from the OEC trader. You can download this feature from the plug-in page on the Open E Cry website at http://www.openecry.com/traderstoolbox/plugin_download.cfm.

After the plug-in is installed, you must initiate the plug-in by going into File -> Plug-Ins -> eSignal. You should see the following dialog:



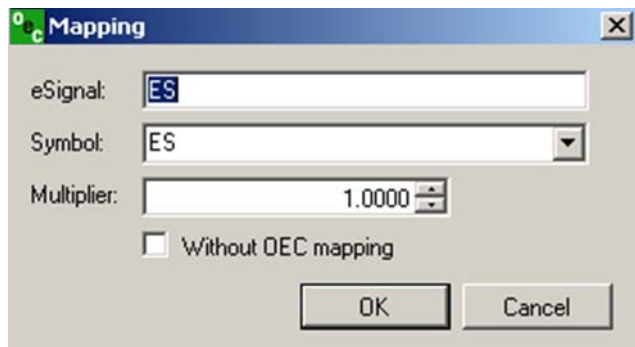
Set Up & Connection Testing

You can test that you have all the necessary eSignal installation files by clicking the 'eSignal Info' button. If all eSignal files and software are installed correctly, you will see a dialog stating 'eSignal is installed and API is entitled'. Please note that your eSignal account must have the API entitlement. If eSignal is not properly installed or configured you will receive a dialog stating 'eSignal is not installed'.

The 'Enabled' checkbox will allow you to connect to the eSignal data manager. If the box is checked, the plug-in is enabled and will connect appropriately with the eSignal Data Manager.

Mapping

You have the flexibility to Add, Edit, and Delete eSignal and OEC mappings. Clicking the 'Show All' will show all of the available OEC symbols. Mappings can be changed by clicking the appropriate symbol and clicking 'Edit'. The 'Remove' will remove the mapping, and 'Add' will add a new mapping. Any of these three functions will present the following dialog:



If the symbols of a same contract are different between OEC and eSignal, you will need to map them using the above dialog. Simply put the eSignal symbol name along with the OEC symbol and click 'OK'.

Please note: For mapped contracts, in the OEC Trader you will be using the symbol in the OEC column, but the data will be from the mapped eSignal contract. Thus, in the quote window you must use the OEC name, not the eSignal name. If a symbol is marked 'Without OEC mapping' then in the quote window, you must use the eSignal symbol name.

Mapping Dialog Options

eSignal: eSignal Symbol

Symbol: OEC Symbol. This field is not available if 'Without OEC Mapping' is used.

Multiplier: Price multiplier factor

Without OEC Mapping: Allows you to have symbols outside of what OEC offers. If this is used, the description will show 'eSignal Only' in the mapping list.

After new symbols are added, they can be utilized in charts and quotes like any other OEC symbol.

Note: If a particular symbol is checked, that means data will be coming from the eSignal data feed; not OEC.